



**HEAVY DUTY  
WATER METER**  
CMI/WESDOM BRAND



---

# **WATER INDUSTRIES NETWORK CORP.**

*Consolidator of Water  
& Waste Water Materials*

---

# Water Meter for Potable Cold & Hot Water ISO 4064

## Dry Dial Brass Body Water Meter

Multi-jet dry type water meter for residential application in sizes 15mm-50mm for cold/hot water.

### Anti Back Flow

### Stainless encapsulated body

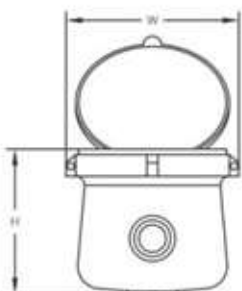
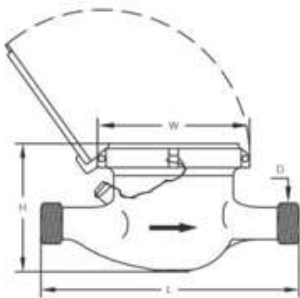
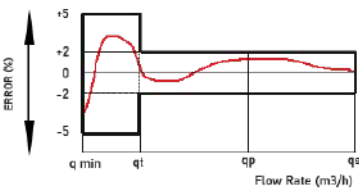


# HEAVY DUTY WATER METER

### TECHNICAL SPECIFICATIONS

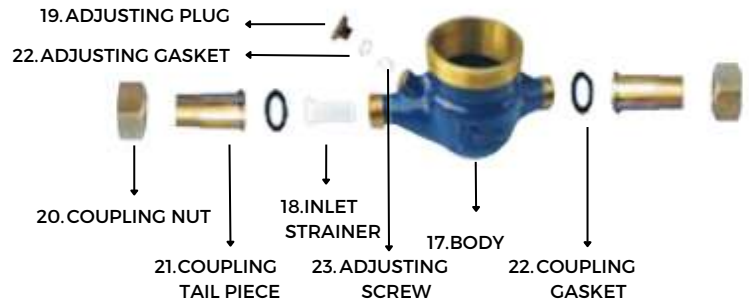
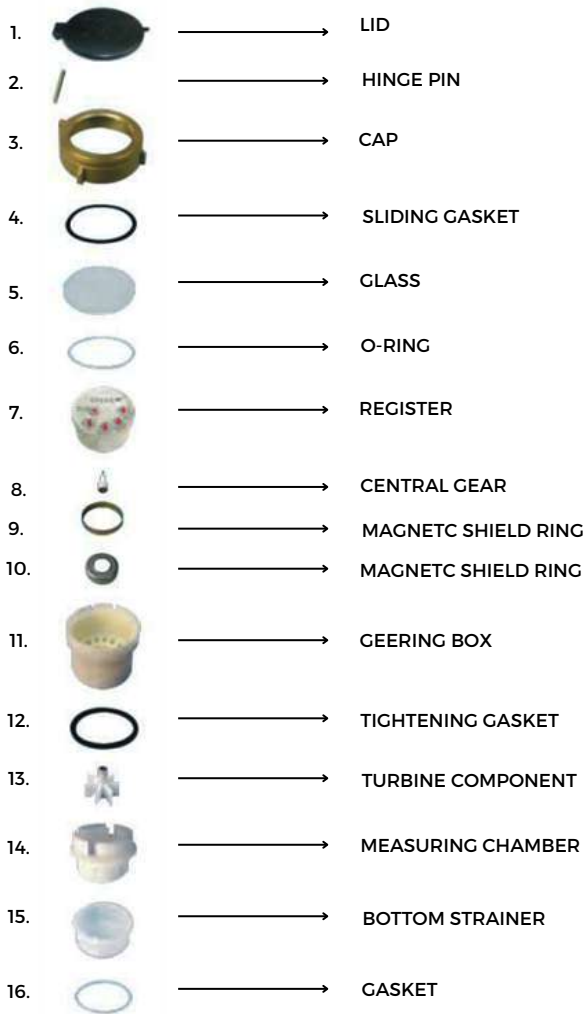
1	BRAND	CMI / WESDOM	9	WORKING CONDITIONS	Pressure Rating - 16 Bars ( 1.6Mpa)		
	2 STANDARD	ISO 4064			Temperature - Hot water 90 degrees		
	3 NOMINAL DIAMETER (mm)	15mm			Temperature - Cold water 50 degrees		
4	SIZE ( inch)	1/2"	10	METROLOGICAL DATA	Maximum Flow Rate Q4 ( l/h) - 3125		
5	METER TYPE	Multi Jet Magnetic Dry Type Vane Wheel for Cold & Hot Water			Nominal Flow Rate Q3 (l/h) - 2500		
6	METER BODY	Glass Lens Cover Multi-Directional Brass Body - 58%			Transitional Flow Rate Q2 ( l/h) - 50		
7	REGISTER	Sealed Dry Dial Register to Ensure Longtime Reading Accuracy	11	METROLOGICAL CLASS	Minimum Flow Rate Q1 (l/h) - 31.25		
		Magnetic Shield for External Protection			Class B		
		Magnetic Drive to Lower Transmission Resistance			12	ACCURACY	Max. Flow & Trans. Flow = ( + - ) 2%
		Hermetically Sealed					Trans. Flow & Min. Flow ) = ( + - ) 5%
8	DIMENSIONS	External Regulating Device	13	READING	Minimum Reading ( Liter ) .05		
		Meter Reading in Cubic Meter			Maximum Reading ( m3) 99.999		
		Cubic meter Register (m3)99.9999			14	BODY MARKINGS	Embossed Flow Direction Arrow
Length - 165 / 190	15	PAINTING FINISH	Fusion Bonded Epoxy ( FBE) Powder Coated(Automotive Finish Look)				
Width - 99/104			16	ACCESSORIES			2 pieces Coupling
Height - 116/121							2 pieces Coupling nut
Connecting Thread D - G3/4B					2 pieces plastic washer/cap		
		Weight - 1.65 kgs					

FLOW ERROR CURVE



### OVERALL DIMENSION AND WEIGHT

DN (mm)	15	20	25	32	40	50	50
Size (inch)	1/2"	3/4"	1"	1-1/4"	1-1/2"	2"	2"
Length (L)	165/190	190	260	260	300	300	280
Width (W)	99/104	98	103.5	103.5	125	125	160
Height (H)	116/121	117	124	124	162	162	187.5
Connecting Thread D	G3/4B	G1B	G11/4B	G11/2B	G2B	G21/2B	Flange end
Weight (kgs)	1.65	1.79	1.85	2.68	5.25	7.25	



DN (mm)	15	20	25	32	40	50	
Size (inch)	1/2"	3/4"	1"	1-1/4"	1-1/2"	2"	
Q4(l/h)	3125	5000	7875	12500	20000	31250	
Q3(l/h)	2500	4000	6300	10000	16000	25000	
R=80	Q2 (l/h)	50	80	126	200	320	400
	Q1 (l/h)	31.25	50	78.75	125	200	250
R=100	Q2 (l/h)	40	64	100.8	160	256	400
	Q1 (l/h)	25	40	63	100	160	250
R=125	Q2 (l/h)	32	51.2	80.64	128	204.8	200
	Q1 (l/h)	20	32	50.5	80	128	
R=160	Q2 (l/h)	22.5	40	63	100	160	400
	Q1 (l/h)	15.62	25	39.37	62.5	100	250
Max. Reading (m3)	99,999	99,999	99,999	99,999	99,999	99,999	
Min. Reading (liter)	0.05	0.05	0.05	0.05	0.05	0.05	
Max. Pressure (Bar)	16	16	16	16	16	16	
Pressure Loss ( $\Delta P$ )	63						
Max. Temperature	T=50/90						

# FLOW METER

## A. Features

- Dry-dial, magnetic drive
- Vacuum sealed register.
- Removable element unit and strong universality.
- Measuring high flow rate with low head loss.
- Pulse Output: DN50-200mm 1000L/P, 100L/P, DN 250-300mm, 10000L/P, 1000L/P
- International Standard ISO 4064.

## B. Working condition

- Water temperature: T30 T50 T90
- Water pressure class: MAP16 MAP10
- Pressure-loss Class:  $\Delta p63$

## C. Maximum permissible errors

- (1) From minimum flow-rate(Q1) inclusive to transitional flow-rate(Q2) exclusive  $\pm 5\%$ .
- (2) From transitional flow-rate(Q2) to overload flow-rate(Q4): $\pm 2\%$ ; (Hot water meter  $\pm 3\%$ ) $^{\circ}C \leq$

## D. Main Technical Specification

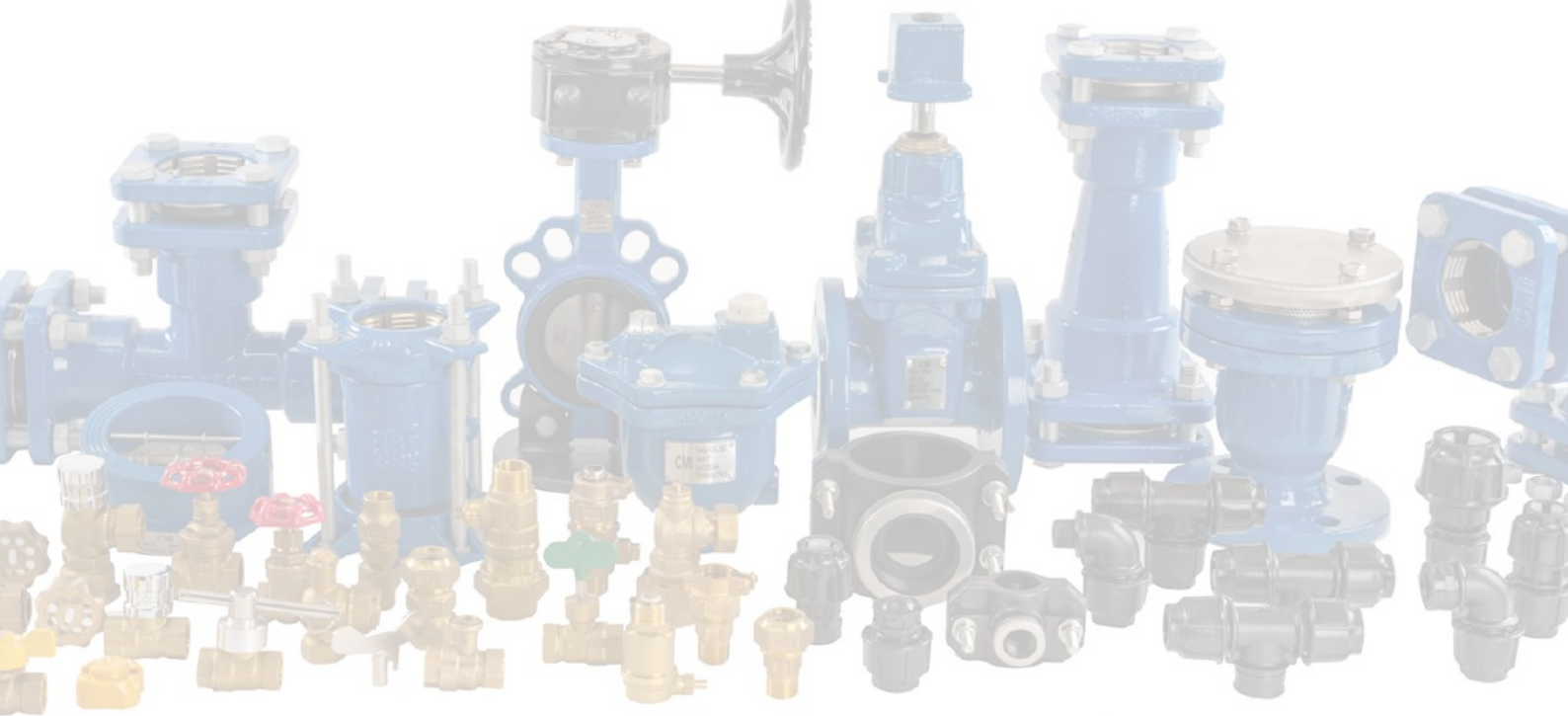
TYPE	Size (mm)	Class	Q4 (Overflow)	Q3 Permanent flow	Q2 Transitional flow	Q1 Min. flow	Min Reading	Max Reading
			m3			m3		
LXLC-50	50	R50 (R80)	31.25	25	0.8	0.5	0.0005	999,999
LXLC-65	65		50	40	1.28	0.8	0.0005	999,999
LXLC-80	80		78.75	63	2	1.26	0.002	999,999
LXLC-100	100		125	100	3.2	2	0.002	999,999
LXLC-125	125		200	160	5.12	3.2	0.002	999,999
LXLC-150	150		312.5	250	8	5	0.002	999,999



CMI/WESDOM BRAND

## Dimensions

Type	Size	L Length	H Height	Connecting flange		
				Outside Diameter	Bolt circle diameter	Connecting Bolts (n-M)
LXLC-50	50	200	214	165	125	4-M16
LXLC-65	65	200	224	185	145	4-M16
LXLC-80	80	225	279	200	160	8-M16
LXLC-100	100	250	289	220	180	8-M16
LXLC-125	125	250	299	250	210	8-M16
LXLC-150	150	300	319	285	240	8-M20



---

## **WATER INDUSTRIES NETWORK CORP.**

46 JP BAUTISTA ST. BARANGAY 79, CALOOCAN CITY  
+632-8879-1573 | +63-917-515-8583  
salesupport@wincorp.info | admin@wincorp.info

[www.wincorp.info](http://www.wincorp.info)

facebook: Water Industries Network Corporation – Wincorp

---